

Pre-Departure Check List

| Notes | SAFETY ITEMS |
|-------|---|
| | LifeJackets |
| | At least one Coast Guard approved device per passenger and a minimum of 8 on board. |
| | A throwing line. |
| | Explain the location and use of all Life-Jackets to passengers and crew that may be new to the vessel. |
| | Sound Producing Devices (Whistle) |
| | Must have a horn capable of producing a four-second blast audible for at least 1/2 mile. |
| | If a portable air horn, have a spare can of air or an alternate device. |
| | Lights and Shapes |
| | All navigation lights functional as required. |
| | Instrumental lights working. |
| | If you intend to engage in an activity that requires a day shape, have the required shapes. |
| | Flashlight on-board. |
| | Distress Signals |
| | Accessible flares, day signals, etc., stored in a dry location. |
| | Carry signals at all times even if not required by the Coast Guard. |
| | Inform the crew and passengers of their location and their use. |
| | Ventilation |
| | On any powered vessel or auxiliary powered sailboat, or vessels using LPG for cooking or heat, check that all interior spaces are well ventilated before departure. |
| | If fuel smells are detected before ventilating, check after running the blowers for several minutes before starting. |
| | If odour persists, stop and look for the source of the leak. |
| | Fire Extinguishers & Fire Blanket |
| | Accessible fire extinguisher. Do you have at least those required by the UK Coast Guard.? |
| | Check to be sure mounts are secure and functional before departure. |
| | Take the time to point out locations to passengers and crew. |
| | Battery Care |
| | Dual charging system, is the selector switch in the proper position? |
| | Is the power on to the entire vessel? |
| | Spare batteries for accessories such as a handheld radio, flashlight, portable navigational aid, etc. |
| | If they are rechargeable, are they charged? |
| | Bilges |
| | Check to be sure bilges are reasonably dry and that pumps are working OK |
| | Clean up any spilled oil or waste in bilges so as to prevent odours. |
| | Gas Cooker Management |
| | Check you have spare gas cylinders and the drain plug allows gas to freely drain outside of hull. |
| | Make sure crew are familiar with gas safety procedures and know where the shut off taps are located |
| | |

Pre-Departure Check List

| PAPERWORK | |
|------------------|---|
| | Documentation |
| | Have the ship's papers, ownership, insurance, radio license, fishing permit, etc. on board. |
| | If required make sure you have the correct customs documentation |
| | |
| | Charts, Almanac, Tidal Stream Atlas and Pilots |
| | Have the relevant chart or charts for your intended passage, regardless of your level of local knowledge. Ideally have the latest pilot books and an up to date Almanac for tides and port pilotage notes Also a Tidal Stream Atlas for your passage would be hugely beneficial for passage planning. |

| VESSEL MAINTENANCE & CREW COMFORT | |
|--|---|
| | Tools and Spares |
| | Basic tool box on-board. |
| | Box of spares aboard, e.g., fuel filter, light bulbs, head parts, through hull plugs, etc. |
| | Lead Line for calibrating echo sounder |
| | |
| | Fuel and Oil |
| | Are your tanks topped-off? |
| | If not, have enough fuel to provide a reasonable margin of safety for your return. |
| | Check the engine oil and coolant level and ensure you carry spares such as impellers, fan belts, oil filters, spare oil and spare fuel. |
| | |
| | Sails and Standing Rigging on Yachts |
| | Check all standing rigging & deck fittings, guard rails, jack stays and sails for wear and tear. |
| | |
| | Water and Food |
| | Make sure all water tanks are full and you have full spare water containers |
| | Make sure there are enough rations for the passage and for emergencies |
| | Prepare sandwiches and hot drinks for passage |
| | |
| | Docking and Anchoring |
| | At least one anchor set up and bent-on to your anchor line. |
| | Two or three extra dock-lines in case of unusual conditions dockside. |
| | Visually inspect the lines you use for chafe or wear. |
| | At least two fenders on-board for docking or towing if required. |
| | |
| WEATHER | |
| | Weather Forecast |
| | Did you check the weather forecast? |
| | Radio on board to receive weather updates. |
| | Note all Coastguard VHF working channels for weather updates |
| | |
| | |



SAFETY IDENTIFICATION SCHEME (CG66)

If possible, please enclose a photo of your vessel

DETAILS OF VESSEL/CRAFT

| | | | |
|-------------------------|--|----------------------------------|--|
| Name of craft | | MMSI number | |
| Where name displayed | | EPIRB Registration No. | |
| Sail or fishing number | | Speed and Endurance under power: | |
| Small Ships Register No | | Knots | |

TYPE OF CRAFT (Please tick where appropriate)

Sail Yacht Dinghy Motor Yacht Motor Cabin Sports Boat Inflatable
 Jet Ski Canoe/Kayak Sail Board Narrow Boat Barge Other*

*If other, please specify

DESCRIPTION OF VESSEL/CRAFT

| | | | | | |
|--------------------------------|--|--------------------------------|--|--------------------|--|
| Type of Craft/Make Model | | | | | |
| Length in metres | | Draft in metres | | No. of Hulls | |
| Hull ID No. | | Colour of sails | | Colour of Topsides | |
| Colour of hull above waterline | | Colour of Hull below waterline | | Sail Rig | |

LIFESAVING EQUIPMENT

| | | | | | |
|----------------------------|--|------------------------------------|--|----------------|--|
| Liferaft (make/model) | | Colour | | Serial No. | |
| Dinghy (make/model) | | Type | | Colour | |
| No. of Lifejackets | | Colour of lifejackets | | Flares carried | |
| No. of liferings carried | | Do liferings show the vessels name | | | |
| Other lifesaving equipment | | | | | |

RADIO NAVIGATION EQUIPMENT

RADIO: VHF MF HF CALLSIGN CHANNELS
 DSC VHF MF HF HANDHELD VHF VHF & DSC
 EPIRB 121.5MHz 406MHz GPS SATNAV Radar Echo Sounder SART

DETAILS OF ACTIVITY

Usual Type of Activity Usual Sea Areas

Where is boat normally kept: Berth Mooring Foreshore Home Stowage

Mooring, Berth, Foreshore or Stowage Address:

DETAILS OF OWNER

DETAILS OF SHORE CONTACT

DETAILS OF CLUB

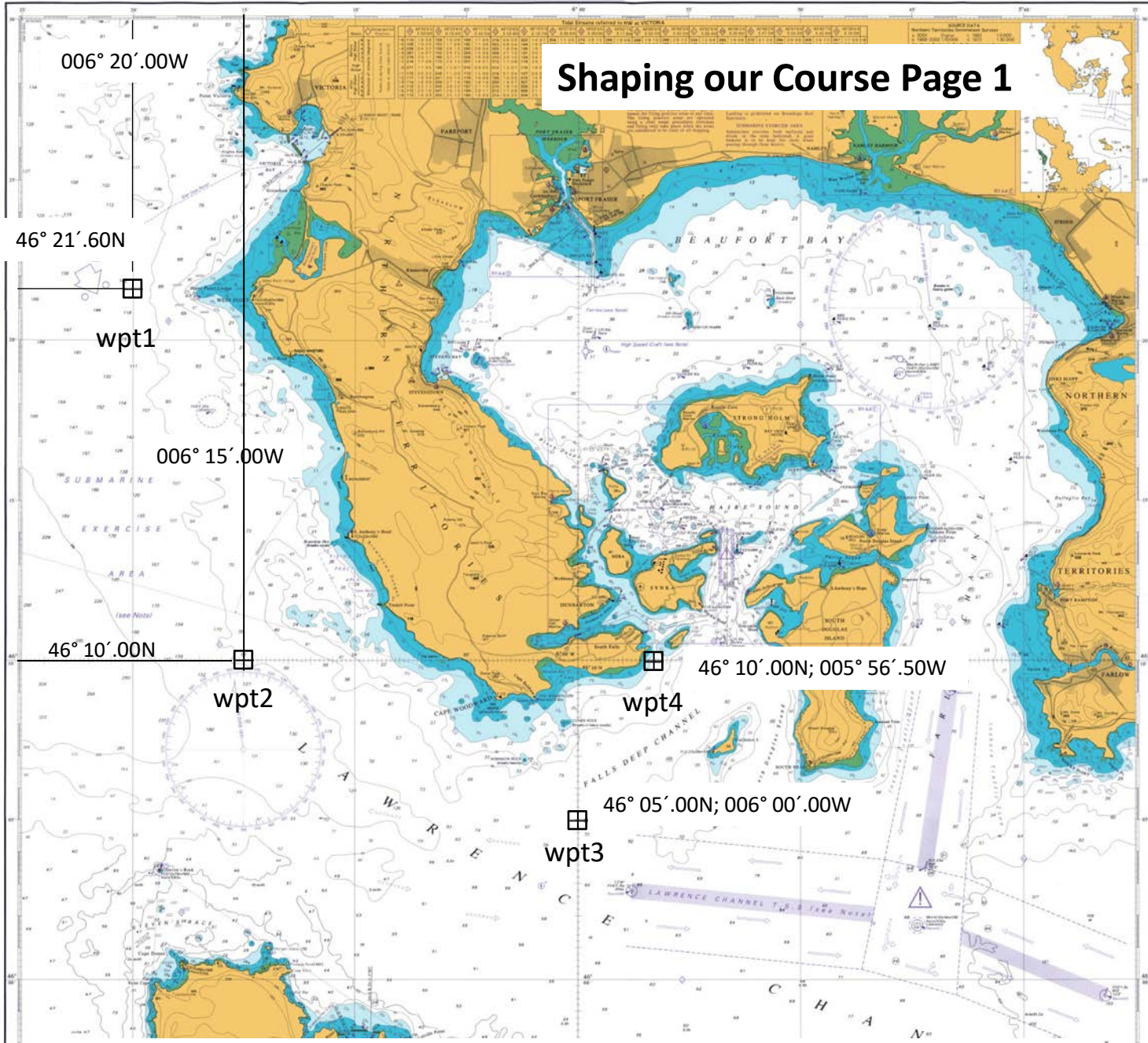
| | | |
|-----------------------|-----------------------|--------------------------------|
| Name: | Name: | Name of Club or Association: |
| Address: | Address: | Telephone: |
| Telephone: Mobile: | Telephone: Mobile: | Signature of Owner Date |

THIS INFORMATION WILL BE USED FOR SEARCH AND RESCUE AND SAFETY INFORMATION PURPOSES ONLY

WHEN COMPLETED, PLEASE RETURN TO YOUR NEAREST COASTGUARD
CO-ORDINATION CENTRE

Passage planning reference guide

- 1. Weather and sea state**
 - a. Consider the suitability of boat and experience level of the crew for intended passage.
- 2. Consider proposed passage**
 - a. Distance
 - b. Estimate boat speed and determine expected duration.
- 3. Study Pilotage Notes for proposed Departure & Destination**
 - a. For both ports, make notes and underline any points you think maybe critical that could affect your start or arrivals time, concerning any Weather restrictions/advice, time restrictions with respect to access, Navigation hazards (rocks, shallow water, locks), Customs clearance, VHF Channels and last note any Navigation aids, lights, leading lines, buoyage that could aid your pilotage plan.
 - b. Create tide curves for Height reference if required.
 - c. Pilotage plans should be created once you have completed your passage plan.
- 4. Work out Estimate Time of Departure**
 - a. based on any critical time slots for departure, on route and arrival
 - b. Consider Tidal Streams when is it favourable both to shorten your journey and suitable for a smooth passage. Power vessels prefer wind and tide in the same direction which may require you going against the tide making the journey time longer
- 5. Shape our Course.**
 - a. Consider any hazards and areas we need to avoid
 - b. Place waypoints to aid navigation at obvious turn points ideally position waypoints in grid lines
 - c. Identify any transits, lighthouse, beacons to enable waypoint confirmation without GPS
 - d. Make a note of the Latitude and Longitude of each waypoint together with the distance and COG for each leg.
- 6. Identify objects on which we can take bearings or transits, to update and confirm position and route to supplement the use GPS**
- 7. Consider Port of refuge**
 - a. **Develop pilotage plans and notes for this port.**
- 8. Create a watch system**
- 9. Allocate time to go through pre-departure checklist with crew to ensure readiness for passage**



Shaping our Course Page 1

006° 20' .00W

46° 21' .60N

wpt1

006° 15' .00W

46° 10' .00N

wpt2

46° 10' .00N; 005° 56' .50W

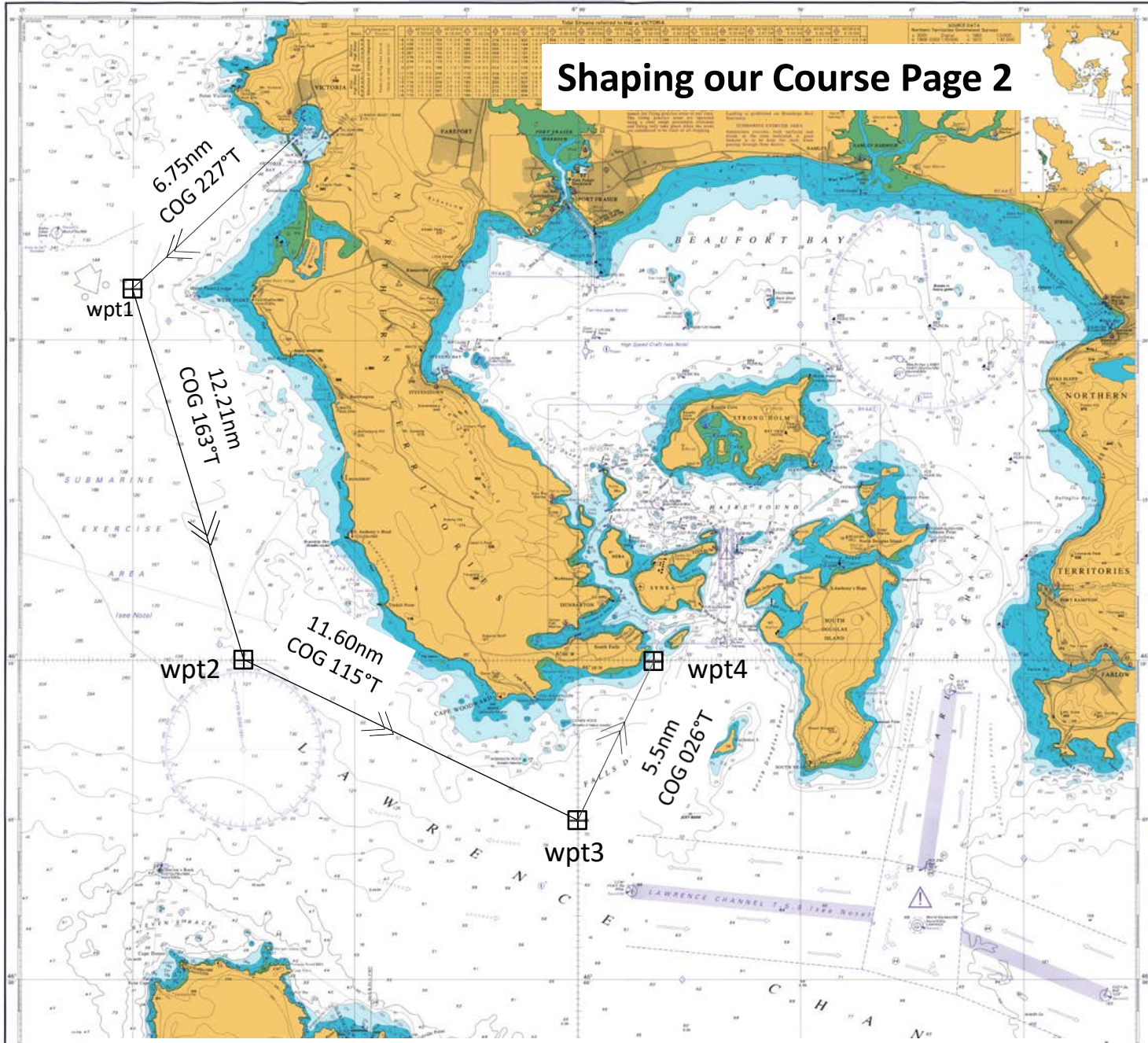
wpt4

46° 05' .00N; 006° 00' .00W

wpt3

Passage plan Victoria to Setter Hall Marina, Dunbarton.

Shaping our Course Page 2



Passage plan Victoria to Setter Hall Marina, Dunbarton.

Passage Planning Checklist for Victoria to Setter Hall Marina, Dunbarton

| | | | |
|----------|---------------|-------|--|
| Date | July the 18th | | <i>The 24 hour weather forecast is North Easterly 3 to 4. Slight seas, good viability.</i> |
| From | Port Victoria | To | Setter Hall Marina, Dunbarton |
| Distance | 44.5 | Speed | 10kt |
| ETD | 11:30 hours | Time | 3.5 hours |
| | | ETA | 16:00 hours |

| | |
|---|---|
| Departure Port Victoria | |
| VHF: | Marina 80 |
| Bridge Times | N/A |
| Lock Times | N/A |
| Bar/Sill Crossing Times | N/A |
| Departure Procedure | Departure Port Tides (SP/NP, LW/HW Times and Heights) |
| <i>Exit north channel through breakwater, keeping SCM well to starboard when leaving Marina</i> | No restrictions |
| VTS Details | VTS Ch 12, 14, 16 |
| | Standard Port Tides (SP/NP, LW/HW Times and Heights) |
| | HW 04:17 UTC 05:17 DST Ht. 5.1m |
| | LW 10:44 UTC 11:44 DST Ht. 1.3m Range 3.8 Mid Range |
| | HW 17:03 UTC 18:03 DST Ht. 4.7m |
| | LW 23:01 UTC 24:01 DST Ht. 1.6m Range 3.1 Mid Range |

| | |
|---|--|
| Arrival Port Setter Hall Marina | |
| VHF: | Port Control Ch12 Marina Ch80 |
| Bridge Times | N/A |
| Lock Times | N/A |
| Bar/Sill Crossing Times | N/A |
| Arrival Window | Before 1600hrs |
| Arrival Procedure | Arrival Port Tides (SP/NP, LW/HW Times and Heights) |
| <i>Monitor chan 12 for traffic Beware of ferry between Rhu and Northerness. Speed limit 10 knots West of 'NN' SAM and '12A' PAM speed limit 6 knots</i> | Same as above |
| VTS Details | None |
| | Standard Port Tides (SP/NP, LW/HW Times and Heights) |
| | DUNBARTON |
| | HW 05:18 UTC 06:18 DST Ht. 3.7m |
| | LW 10:29 UTC 11:29 DST Ht. 1.3m Range 2.4 Mid Range |
| | HW 18:03 UTC 19:03 DST Ht. 3.9m |
| | LW 23:07 UTC 24:07 DST Ht. 1.4m Range 2.5 Mid Range |

Passage Planning Checklist for Victoria to Setter Hall Marina, Dunbarton

| | | | |
|--------------------------|--|------------------------|--|
| En Route | | | |
| Tidal Stream Analysis | -5Hr to + 1 Hrs Victoria | Tide Races | Strong eddies between Swifta Island and South Falls Headland. |
| Tidal Gates (Times) | None | TSS | |
| Prohibited areas/Dangers | Nights Bank ODAS Buoy exclusion zone Shallow at Tindal Point Keep clear of St Lawrence TSS Strong eddies between Swifta Island and South Falls Headland. | Principle lights/Marks | Wpt 1 Transit PHM with West Point Ledge After 4.3nm pass ODAS 1.2nm on port St Stevens Rock LH; Alpha Juliet Delta rig; Radio Mast at Hill Head; South Anthony's Head LH & Coast Guard Station @ Cape Woodward; Cape Balshaw LH; LCW yellow pillar buoy std bow; Guillermont Island to stb & Cape Balshaw to port with Swifta island ahead. |

Leg Details

| From | To | WPT | Track °M | Dist |
|---------------------|--------------------|---------------------------|----------|-------|
| Victoria breakwater | Wpt1 | 46° 21'.60N; 006° 20'.00W | 227°T | 6.75 |
| Wpt1 | Wpt2 | 46° 10'.00N; 006° 15'.00W | 163°T | 12.21 |
| Wpt2 | Wpt3 | 46° 05'.00N; 006° 00'.00W | 115°T | 11.60 |
| Wpt3 | Wpt4 | 46° 10'.00N; 005° 56'.50W | 026°T | 5.5 |
| Wpt4 | Setter Hall Marina | Use pilotage notes | | |

Alternative Port *NOT REQUIRED*

| | | | | |
|-------------------------|----------------------|---|-----|---|
| VHF: | <input type="text"/> | Standard Port Tides (SP/NP, LW/HW Times and Heights) | | |
| Bridge Times | <input type="text"/> | | | |
| Lock Times | <input type="text"/> | | | |
| Bar/Sill Crossing Times | <input type="text"/> | | | |
| Alternative Procedure | | Alternative Port Tides (SP/NP, LW/HW Times and Heights) | | |
| | | N/A | | |
| | | LW | DST | M |
| VTS Details | <input type="text"/> | HW | DST | M |